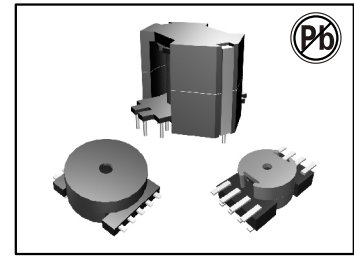


TELECOM TRANSFORMERS

RM & POT SERIES



FEATURES:

High inductance.
 Low leakage inductance
 Low interwind capacitance
 Compact size and Surface-mounted
 Designed to meet UL, CSA,
 VDE, BABT safety standard

OPTIONS:

Tape and reel is standard
 Bulk packaging available for FAaller quantities
 Custom design available
 Tolerance: 5% is standard, Tighter tolerance available
 RM 4, 5, 6, 7, 8, 10, 12, 14 available
 POT 3, 2, 4, 5, 6, 7, 9, 11, 14, 18, 22, 26, 30, 36, 42, 48
 available

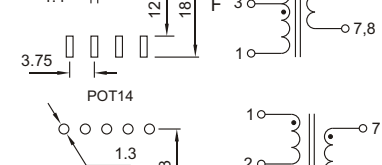
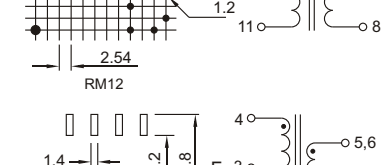
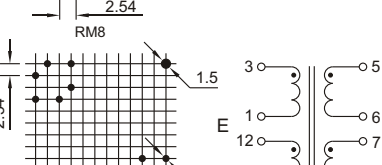
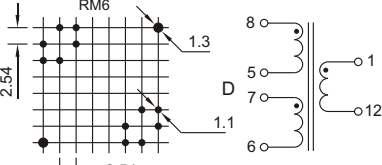
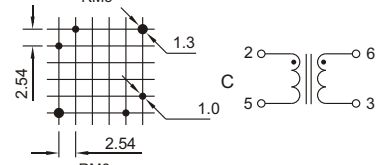
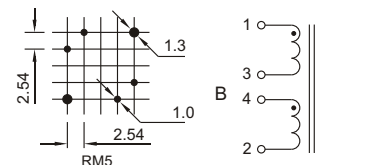
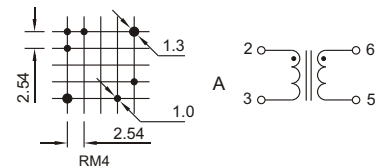
COMMON APPLICATIONS:

Modem
 Fax machine, Hub
 ISDN, ADSL, HDSL, PABX
 Other telecommunication facilities etc
 Switching power supplies
 AC-DC, DC-DC converters

ELECTRICAL CHARACTERISTICS MSN: bruce_fu-vip@hotmail.com

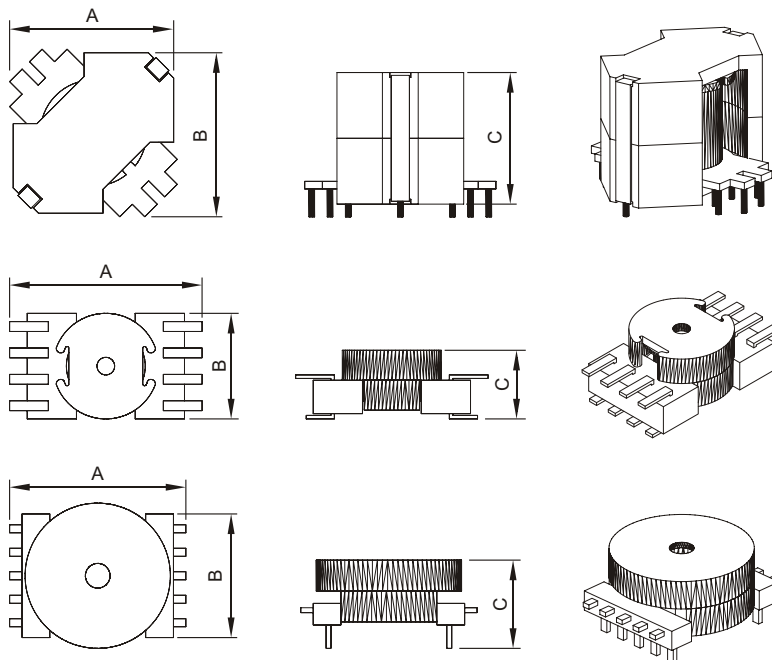
Part No.	Inductance(10kHz/0.1V Typ)	Turn Ratio	DCR(max)	Hi-pot (Pri-Sec)	Schematic
RM4	45.2mH 35%(3-4)	1:1(2-3:5-6)	2.5:2.5(2-3:5-6)	500VDC	A
RM5	43.5mH 6%(1-3=3-4)	1:1(1-3:4-2)	4.6:4.6(1-3:4-2)	1000VDC	B
RM6	20mH 6%(2-3 tie 6+5)	1:1(2-5:6-3)	4.0:4.0(2-5:6-3)	850VDC	C
RM8	3.0mH 6%(8-6 tie 5+7)	5.24:1(8-6:1-12 tie 5-7)	1.7:1.7:0.42(8-5:7-6:1-12)	2500VAC	D
RM12	140 Hmin(3-1=2-11)	1:1:2:2(3-1:12-11:5-6:7-8)	0.012:0.05(3-1=12-11:5-6=7-8)	500VDC	E
POT14	450 H 25%(4-1)	3.75:1(4-1:6-8)	0.04:0.012:0.012(4-3:5-7:6-8)	1250VDC	F
POT23	15.5mH 10%(1-4 tie 2+3)	1:0.6(1-4:7-9 tie 2+3)	13:7.8(1-4:7-9 tie 2+3)	1500DC	G

TECHNICAL INFORMATION



Note: All Dimensions in mm

PHYSICAL CHARACTERISTICS MSN: bruce_fu-vip@hotmail.com



Dimensions(mm)

Part No.	RM4	RM5	RM6	RM8	RM12	POT14	POT23
A	10.5max	13.5max	16.6max	22.0max	31.7max	21.0max	24.4max
B	10.5max	13.5max	16.6max	22.0max	31.7max	15.0max	23.5max
C	11.0max	11.5max	12.7max	17.5max	25.4max	9.0max	11.6max