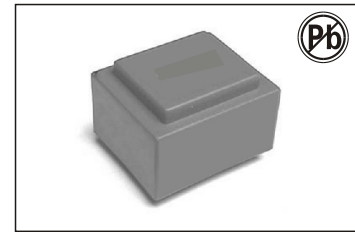


50/60HZ PCB MOUNT TRANSFORMERS - EI RANGE

3.2W EI 38-13.6-PE3813 SERIES



FEATURES:

Vacuum filling
 Two compartments bobbins
 Self-exting Ullshing plastics UL 94 VO
 Degree of protection IP 00
 150 grams weight

OPTIONS:

Bulk packaging is standard
 Custom design available

COMMON APPLICATIONS:

Medical eq Ulpments Industrial eq Ulpments
 Industrial controls Test eq Ulpment
 Industrial computers Avionics & telecom

ELECTRICAL CHARACTERISTICS

MSN: bruce_fu-vip@hotmail.com

PRIMARY VOLTAGE: 230						PRIMARY VOLTAGE: 115					
Part Number	Secondary voltage V	Secondary Current mA	No-load voltage V	Ambient Temperature	Rating VA	Part Number	Secondary voltage V	Secondary Current mA	No-load voltage V	Ambient Temperature	Rating VA
PE381393	6	533	8	T70B	3.2	PE381305	6	533	8	T70B	3.2
PE381394	9	356	12	T70B	3.2	PE381306	9	356	12	T70B	3.2
PE381395	12	267	16	T70B	3.2	PE381307	12	267	16	T70B	3.2
PE381396	15	213	20	T70B	3.2	PE381308	15	213	20	T70B	3.2
PE381397	18	178	24.1	T70B	3.2	PE381309	18	178	24.1	T70B	3.2
PE381398	24	133	32.1	T70B	3.2	PE381310	24	133	32.1	T70B	3.2
PE381399	2 6	2 267	2 8	T70B	3.2	PE381311	2 6	2 267	2 8	T70B	3.2
PE381300	2 9	2 178	2 12	T70B	3.2	PE381312	2 9	2 178	2 12	T70B	3.2
PE381301	2 12	2 133	2 16	T70B	3.2	PE381313	2 12	2 133	2 16	T70B	3.2
PE381302	2 15	2 107	2 20	T70B	3.2	PE381314	2 15	2 107	2 20	T70B	3.2
PE381303	2 18	2 89	2 24	T70B	3.2	PE381315	2 18	2 89	2 24	T70B	3.2
PE381304*	2 24	2 67	2 32.1	T70B	3.2	PE381316	2 24	2 67	2 32.1	T70B	3.2

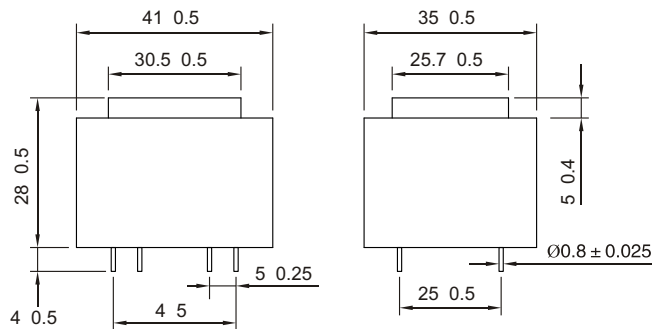
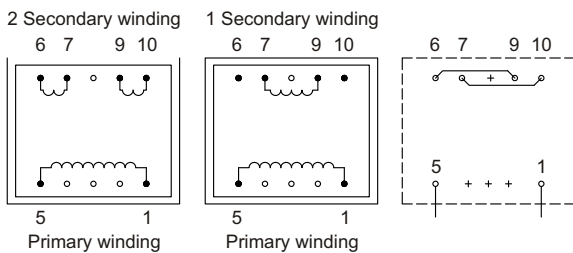
* To be noted : 2 x 24 V non safety transformer approved, conform to EN 61558-2-6 (Isolating transformer).

TECHNICAL INFORMATION

PHYSICAL CHARACTERISTICS

Resin class B CEI 85 (20 000 h testing to CEI 126)
 Fuse protection on secondary side (see diagram) to be assumed by customer
 30 V and 36 V models are VDE EN 61558-2-6 certified (production on request)
 Insulation voltage 4 KV
 100% tested production
 Certification : CCA procedure on request

All dimensions in mm



Recommended Drill-hole Diameter for 1.3mm pins