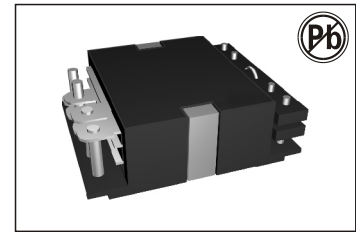


# HIGH FREQUENCY 100W PLANAR TRANSFORMERS TP20A SERIES



## FEATURES:

Power Rating Up to 100 Watts  
High Efficiency  
Footprint 20.12 mm 18.50 mm  
Lower Profile of 7.4 mm  
High Isolation (operational) 1500 Vdc  
High Frequency 200 kHz-700 kHz  
Operating Temperature -40 to +125

## OPTIONS:

Weight: 7.60 grams  
Tape & Reel: 250/reel  
Tube: 20/tube

## COMMON APPLICATIONS:

High efficiencies, high power density of 400 watts per cubic inch DC/DC converters.  
For forward, full-bridge, half-bridge and push-pull DC/DC converters.  
Input voltages between 18V and 75V, and output voltages from 18V down to 1.2V DC/DC converters.  
Telecommunications, industrial control systems, Automotive and heavy equipment vehicle systems

## ELECTRICAL CHARACTERISTICS

Part Number	Primary Inductance (uH Min)	Leakage Inductance (uH Max)	DC Resistance (m Max)				Turns Ratio		Primary Second Hi-Pot	Figure	M. Height
			Primary			Secondary	Primary	Secondary			
			A	B	AUX.						
TP20A0601	62.0	0.30	11.5	N/A	55	0.6//0.6	6T	1T//1T	1500VDC	A	7.4mm
TP20A0602	62.0	0.30	11.5	N/A	55	0.6+0.6	6T	1T+1T	1500VDC	A	7.4mm
TP20A0603	62.0	0.30	11.5	N/A	55	2.00	6T	3T	1500VDC	B	7.4mm
TP20A0606	62.0	0.25	23.0	N/A	110	12.0	6T	6T	1500VDC	C	7.4mm
TP20A0608	62.0	0.25	23.0	N/A	110	20.0	6T	8T	1500VDC	C	7.4mm
TP20A0610	62.0	0.25	23.0	N/A	110	35.0	6T	10T	1500VDC	C	7.4mm
TP20A1201	248	0.75	47.5	N/A	130	0.6//0.6	12T	1T//1T	1500VDC	A	7.4mm
TP20A1202	248	0.75	47.5	N/A	130	0.6+0.6	12T	1T+1T	1500VDC	A	7.4mm
TP20A1203	248	0.75	47.5	N/A	130	2.00	12T	3T	1500VDC	B	7.4mm
TP20A1206	248	0.70	95.0	N/A	260	12.0	12T	6T	1500VDC	C	7.4mm
TP20A1208	248	0.70	95.0	N/A	260	20.0	12T	8T	1500VDC	C	7.4mm
TP20A1210	248	0.70	95.0	N/A	260	35.0	12T	10T	1500VDC	C	7.4mm

## APPLICATION OF CONFIGURATION

Part Number	Vin	Vout & Iout
TP20A0601	18-36Vdc	1.2V@55.0A-1.8V@50.0A
TP20A0602	18-36Vdc	2.5V@34.0A-3.3V@30.0A
TP20A0603	18-36Vdc	5.0V@20A
TP20A0606	18-36Vdc	8.0V@12.5A-10V@10.0A
TP20A0608	18-36Vdc	12V@8.33A-15V@6.67A
TP20A0610	18-36Vdc	16V@6.25A-18V@5.56A
TP20A1201	36-75Vdc	1.2V@55.0A-1.8V@50.0A
TP20A1202	36-75Vdc	2.5V@34.0A-3.3V@30.0A
TP20A1203	36-75Vdc	5.0V@20A
TP20A1206	36-75 Vdc	8.0V@12.5A-10V@10.0A
TP20A1208	36-75 Vdc	12V@8.33A-15V@6.67A
TP20A1210	36-75 Vdc	16V@6.25A-18V@5.56A

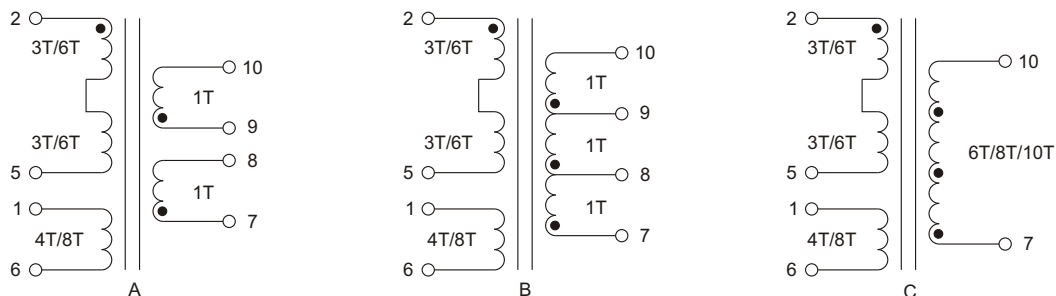
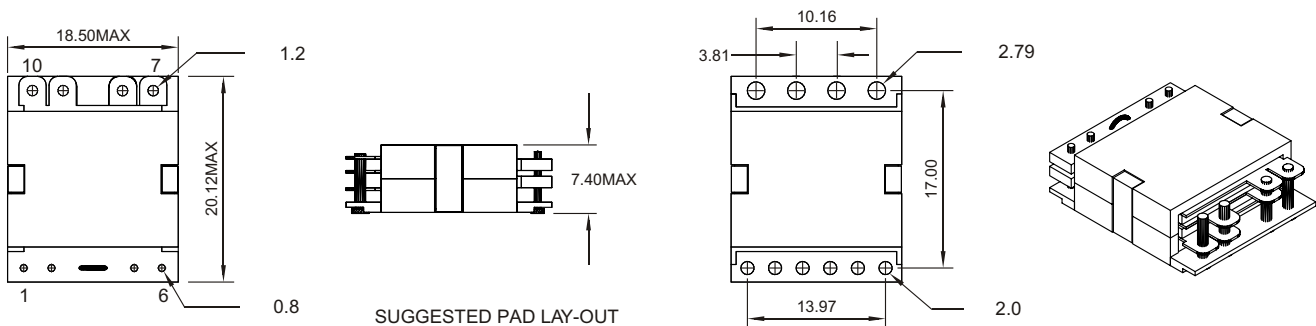
This is a matrix of the winding configurations. They are ideally suited to hand between 75-100W of power supply on DC-CD converters application.

## TECHNICAL INFORMATION

1. The inductance is measured in primary windings Pin(2-5).
2. The leakage inductance is measured in primary winding Pin(2-5) with all other windings shorted.
3. All specifications typical at TA=25 .

## PHYSICAL CHARACTERISTICS

MSN: bruce\_fu-vip@hotmail.com



SCHEMATIC

Note: All specifications subject to change without notice.